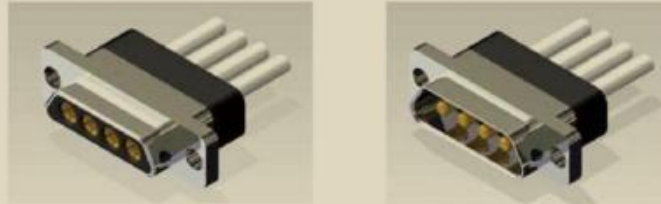


J30J大小电流混装系列


J30J大小电流混装

产品特点

大小电流接触对混装:

导线线芯截芯面积 $0.1\text{mm}^2 \sim 0.15\text{mm}^2$ (小电流), $2.0\text{mm}^2 \sim 3.0\text{mm}^2$ (大电流);

☆ 本系列产品的锁紧组件按订货要求与产品组装在一起供货, 如不需锁紧组件应在合同中注明;

☆ 产品性能符合GJB2446A-2011的要求。

☆ 执行标准: Q/FY QJ0004-2012 《J30J大小电流混装系列电连接器详细规范》

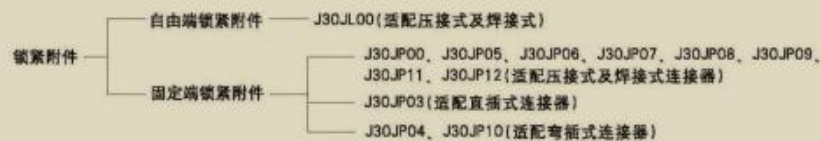
主要技术特征

| | | | |
|------|---|------|------------------------|
| 环境温度 | $-55 \sim +125^\circ\text{C}$ | 接触电阻 | $< 10\text{m}\Omega$ |
| 相对湿度 | $+40^\circ\text{C}$ 达98% | 绝缘电阻 | $> 5000\text{M}\Omega$ |
| 振动 | $10 \sim 2000\text{Hz}$ 196m/s^2 | 介质耐压 | 800V |
| 冲击 | 735m/s^2 | 机械寿命 | 500次 |
| 随机振动 | 功率谱密度: $0.4\text{G}^2/\text{Hz}$ 总加速度均方根值: 23.1G | | |

产品族谱



锁紧附件

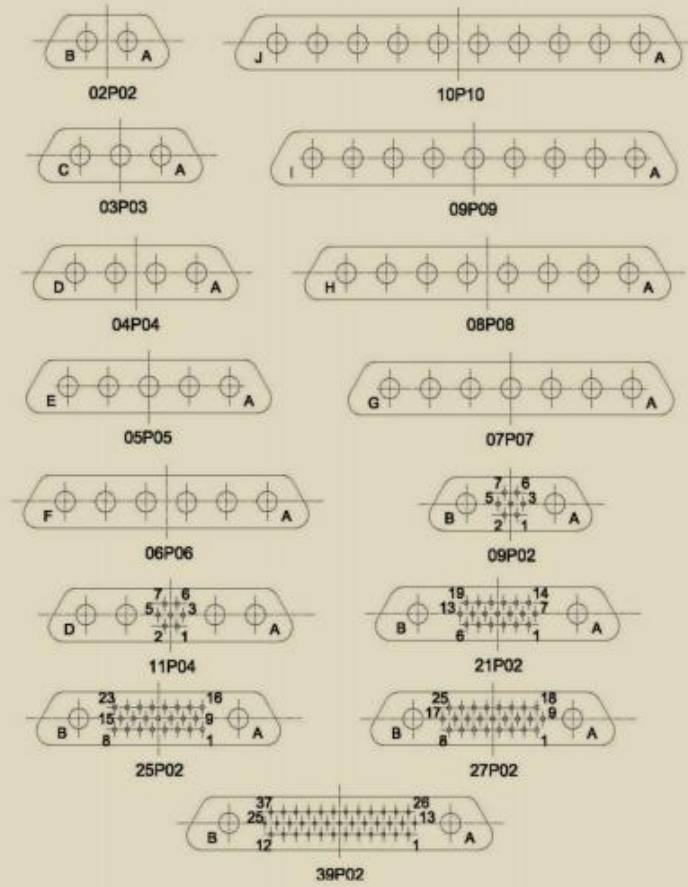


尾部附件

尾部附件——两瓣式线夹合件——A3（适配焊接式）

如上图示，用户在选择J30J系列大小电流混装产品时，须同时选择插头（座）合件及锁紧附件才能组成完整的插头或插座。另外，对焊接式产品，还需根据用户使用要求选取尾部附件（线夹合件）。

型谱排列



注：从插头对接端看。

产品选用必知事项

J30J 25P02 J S C00 C0 000 0 — A3(附加说明)

① ② ③ ④ ⑤ ⑥ ⑦ ⑧ ⑨

①主称代号: J30J

②接触件排列: 见下表

| 代号 | 排列规则 | 代号 | 排列规则 |
|-------|------------|-------|-----------------------|
| 02P02 | 2 芯20A 接触件 | 10P10 | 10 芯20A 接触件 |
| 03P03 | 3 芯20A 接触件 | 09P02 | 7 芯3A 接触件+2 芯20A 接触件 |
| 04P04 | 4 芯20A 接触件 | 11P04 | 7 芯3A 接触件+4 芯20A 接触件 |
| 06P06 | 5 芯20A 接触件 | 21P02 | 19 芯3A 接触件+2 芯20A 接触件 |
| 06P06 | 6 芯20A 接触件 | 25P02 | 23 芯3A 接触件+2 芯20A 接触件 |
| 07P07 | 7 芯20A 接触件 | 27P02 | 25 芯3A 接触件+2 芯20A 接触件 |
| 08P08 | 8 芯20A 接触件 | 39P02 | 37 芯3A 接触件+2 芯20A 接触件 |
| 09P09 | 9 芯20A 接触件 | | |

③小电流接触件类型: 0-无小电流接触件 J-小电流插针 (3A) K-小电流插孔 (3A)

④大电流接触件类型: S-大电流插孔 (20A) P-大电流插针 (20A)

⑤小电流接触件尾端形式: 000-无小电流接触件

C00-压接式, 线芯截面积0.10mm²-0.15mm²

S00-焊接式, N01-直插印制板式 W01弯插印制板式

⑥大电流接触件尾端形式: C0-压接式, 线芯截面积2.0mm²-3.0mm²

S0-焊接式, N1-直插印制板式 W1-弯插印制板式

⑦锁紧附件类型: 000-无锁紧附件 L00-自由端锁紧附件

P□□-固定端锁紧附件 (见下表)

| 代号 | 锁紧附件类型 | 代号 | 锁紧附件类型 |
|-----|--------------------------|-----|--------------------------|
| P00 | 板前安装固定端锁紧附件, 安装板厚度<2.5mm | P08 | 3.4mm 板后安装固定端锁紧附件 |
| P03 | 直插印制板带支撑套筒固定端锁紧附件 | P09 | 2mm 板后安装固定端锁紧附件 |
| P04 | 弯插印制板带安装支架固定端锁紧附件 | P10 | 弯插印制板2mm 板后安装固定端锁紧附件 |
| P05 | 0.6mm板后安装固定端锁紧附件 | P11 | 板前安装固定端锁紧附件, 安装开M3 螺紋孔 |
| P06 | 1.4mm板后安装固定端锁紧附件 | P12 | 板前安装固定端锁紧附件, 安装板厚度<5.5mm |
| P07 | 2.2mm板后安装固定端锁紧附件 | | |

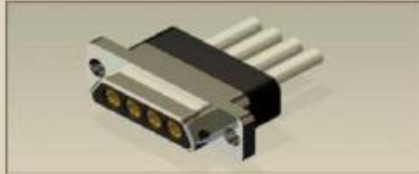
⑧外壳改型: 0-标准型, 铝合金化学镀锌

⑨尾部附件: 不表示-不带尾部附件 A3-两瓣式线夹合件 (仅焊接式)

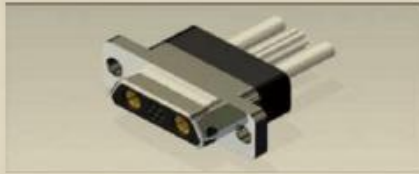
附加说明不是命名规则的组成部分, 顾客在选用时需在中注明压接导线规格, 如: 导线截面积, 长度和颜色等。有特殊连线要求时, 需给出连线关系。

压接式

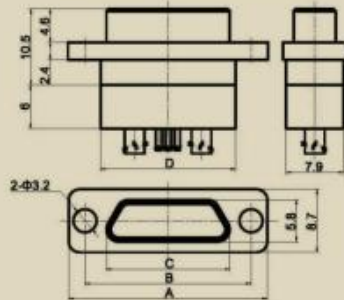
插头 J30J □□P□□ □ S □□□ C0 000 0



J30J 04P04 0 S 000 C0 000 0

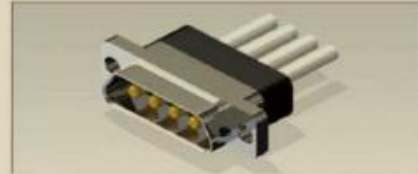


J30J 09P02 J S C00 C0 000 0

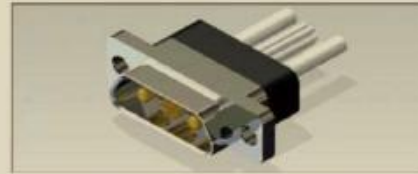


J30J □□P□□ □ S □□□ C0 000 0

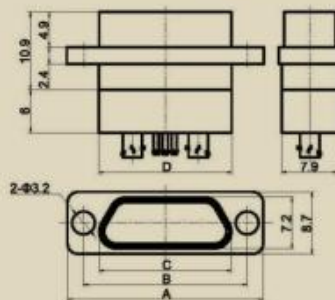
插座 J30J □□P□□ □ P □□□ C0 000 0



J30J 04P04 0 P 000 C0 000 0



J30J 09P02 K P C00 C0 000 0



J30J □□P□□ □ P □□□ C0 000 0

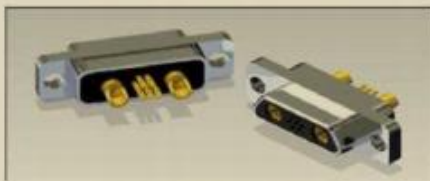
| 插头型号 | 尺寸 | | | | 插座型号 | 尺寸 | | | |
|----------------------|------|------|------|------|----------------------|------|------|------|------|
| | A | B | C | D | | A | B | C | D |
| J30J02P020S000C00000 | 23.2 | 18.8 | 12.9 | 14.5 | J30J02P020P000C00000 | 23.2 | 18.8 | 14.4 | 14.5 |
| J30J03P030S000C00000 | 27.3 | 22.9 | 17 | 18.6 | J30J03P030P000C00000 | 27.3 | 22.9 | 18.5 | 18.6 |
| J30J04P040S000C00000 | 31.4 | 27 | 21.1 | 22.7 | J30J04P040P000C00000 | 31.4 | 27 | 22.6 | 22.7 |
| J30J05P050S000C00000 | 36.3 | 30.9 | 25 | 26.6 | J30J05P050P000C00000 | 36.3 | 30.6 | 26.5 | 26.6 |
| J30J06P060S000C00000 | 39.6 | 35.2 | 29.3 | 30.9 | J30J06P060P000C00000 | 39.6 | 35.2 | 30.8 | 30.9 |
| J30J07P070S000C00000 | 43.7 | 39.3 | 33.4 | 35 | J30J07P070P000C00000 | 43.7 | 39.3 | 34.9 | 35 |
| J30J08P080S000C00000 | 47.8 | 43.4 | 37.5 | 39.1 | J30J08P080P000C00000 | 47.8 | 43.4 | 39 | 39.1 |
| J30J09P090S000C00000 | 51.9 | 47.5 | 41.6 | 43.2 | J30J09P090P000C00000 | 51.9 | 47.5 | 43.1 | 43.2 |
| J30J10P100S000C00000 | 56 | 51.6 | 45.7 | 47.3 | J30J10P100P000C00000 | 56 | 51.6 | 47.2 | 47.3 |
| J30J09P02JSC00C00000 | 29.7 | 24.5 | 18.6 | 20.2 | J30J09P02KPC00C00000 | 29.7 | 24.5 | 20.1 | 20.2 |
| J30J11P04JSC00C00000 | 36.3 | 30.9 | 25 | 26.6 | J30J11P04KPC00C00000 | 36.3 | 30.9 | 26.5 | 26.6 |
| J30J21P02JSC00C00000 | 36.3 | 30.9 | 25 | 26.6 | J30J21P02KPC00C00000 | 36.3 | 30.9 | 26.5 | 26.6 |
| J30J25P02JSC00C00000 | 36.3 | 30.9 | 25 | 26.6 | J30J25P02KPC00C00000 | 36.3 | 30.9 | 26.5 | 26.6 |
| J30J27P02JSC00C00000 | 36.3 | 30.9 | 25 | 26.6 | J30J27P02KPC00C00000 | 36.3 | 30.9 | 26.5 | 26.6 |
| J30J39P02JSC00C00000 | 42.8 | 37.3 | 31.4 | 33 | J30J39P02KPC00C00000 | 42.8 | 37.3 | 32.9 | 33 |

焊接式

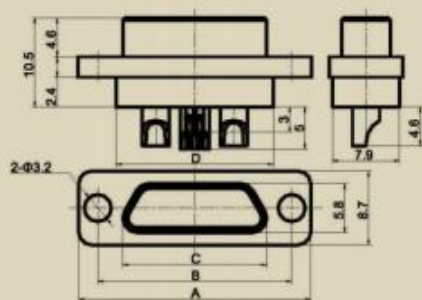
插头 J30J □□P□□ □ S □□□ S0 000 0



J30J 04P04 0 S 000 S0 000 0



J30J 09P02 J S 500 S0 000 0



J30J □□P□□ □ S □□□ S0 000 0

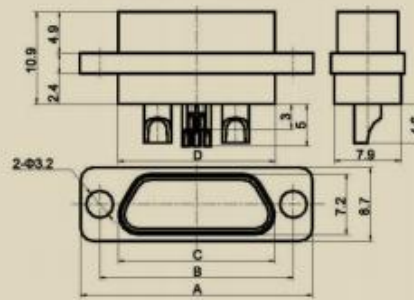
插座 J30J □□P□□ □ P □□□ S0 000 0



J30J 04P04 0 P 000 S0 000 0



J30J 09P02 K P 500 S0 000 0



J30J □□P□□ □ P □□□ S0 000 0

J30J大小电流混装

| 插头型号 | 尺寸 | | | | 插座型号 | 尺寸 | | | |
|----------------------|------|------|------|------|----------------------|------|------|------|------|
| | A | B | C | D | | A | B | C | D |
| J30J02P02S000S00000 | 23.2 | 18.8 | 12.9 | 14.5 | J30J02P02P000S00000 | 23.2 | 18.8 | 14.4 | 14.5 |
| J30J03P03S000S00000 | 27.3 | 22.9 | 17 | 18.6 | J30J03P03P000S00000 | 27.3 | 22.9 | 18.5 | 18.6 |
| J30J04P04S000S00000 | 31.4 | 27 | 21.1 | 22.7 | J30J04P04P000S00000 | 31.4 | 27 | 22.6 | 22.7 |
| J30J05P05S000S00000 | 36.3 | 30.9 | 25 | 26.6 | J30J05P05P000S00000 | 36.3 | 30.6 | 26.5 | 26.6 |
| J30J06P06S000S00000 | 39.6 | 35.2 | 29.3 | 30.9 | J30J06P06P000S00000 | 39.6 | 35.2 | 30.8 | 30.9 |
| J30J07P07S000S00000 | 43.7 | 39.3 | 33.4 | 35 | J30J07P07P000S00000 | 43.7 | 38.3 | 34.9 | 35 |
| J30J08P08S000S00000 | 47.8 | 43.4 | 37.5 | 38.1 | J30J08P08P000S00000 | 47.8 | 43.4 | 39 | 39.1 |
| J30J09P09S000S00000 | 51.9 | 47.5 | 41.6 | 43.2 | J30J09P09P000S00000 | 51.9 | 47.5 | 43.1 | 43.2 |
| J30J10P10S000S00000 | 56 | 51.6 | 45.7 | 47.3 | J30J10P10P000S00000 | 56 | 51.6 | 47.2 | 47.3 |
| J30J09P02JSS00S00000 | 29.7 | 24.5 | 18.6 | 20.2 | J30J09P02KPS00C00000 | 29.7 | 24.5 | 20.1 | 20.2 |
| J30J11P04JSS00S00000 | 36.3 | 30.9 | 25 | 26.6 | J30J11P04KPS00S00000 | 36.3 | 30.9 | 26.5 | 26.6 |
| J30J21P02JSS00S00000 | 36.3 | 30.9 | 25 | 26.6 | J30J21P02KPS00S00000 | 36.3 | 30.9 | 26.5 | 26.6 |
| J30J25P02JSS00S00000 | 36.3 | 30.9 | 25 | 26.6 | J30J25P02KPS00S00000 | 36.3 | 30.9 | 26.5 | 26.6 |
| J30J27P02JSS00S00000 | 36.3 | 30.9 | 25 | 26.6 | J30J27P02KPS00S00000 | 36.3 | 30.9 | 26.5 | 26.6 |
| J30J39P02JSS00S00000 | 42.8 | 37.3 | 31.4 | 33 | J30J39P02KPS00S00000 | 42.8 | 37.3 | 32.9 | 33 |

直插印制板式

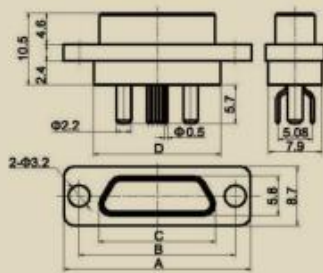
插头 J30J □□P□□ □ S □□□ N1 000 0



J30J 04P04 C S 000 N1 000 0



J30J 09P02 J S N01 N1 000 0

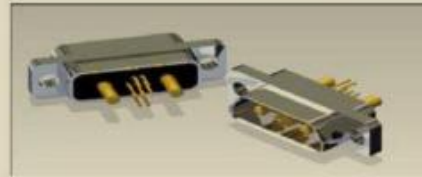


J30J □□P□□ □ S □□□ N1 000 0

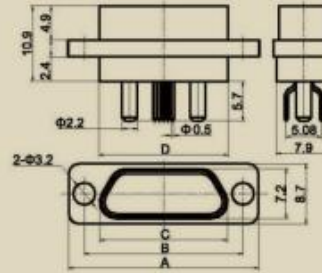
插座 J30J □□P□□ □ P □□□ N1 000 0



J30J 04P04 0 P 000 N1 000 0



J30J 09P02 K P N01 N1 000 0



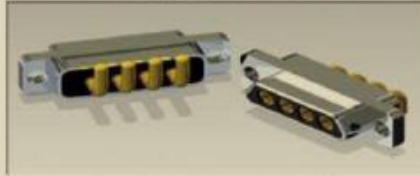
J30J □□P□□ □ P □□□ N1 000 0

J30J大小电流混装

| 插头型号 | 尺寸 | | | | 插座型号 | 尺寸 | | | |
|----------------------|------|------|------|------|----------------------|------|------|------|------|
| | A | B | C | D | | A | B | C | D |
| J30J02P020S000N00000 | 23.2 | 18.8 | 12.9 | 14.5 | J30J02P020P000N00000 | 23.2 | 18.8 | 14.4 | 14.5 |
| J30J03P030S000N00000 | 27.3 | 22.9 | 17 | 18.6 | J30J03P030P000N00000 | 27.3 | 22.9 | 18.5 | 18.6 |
| J30J04P040S000N00000 | 31.4 | 27 | 21.1 | 22.7 | J30J04P040P000N00000 | 31.4 | 27 | 22.6 | 22.7 |
| J30J06P060S000N00000 | 36.3 | 30.9 | 25 | 26.6 | J30J06P060P000N00000 | 36.3 | 30.6 | 26.5 | 26.6 |
| J30J06P060S000N00000 | 36.3 | 30.9 | 25 | 26.6 | J30J06P060P000N00000 | 36.3 | 30.9 | 26.5 | 26.6 |
| J30J07P070S000N00000 | 43.7 | 36.3 | 33.4 | 35 | J30J07P070P000N00000 | 43.7 | 36.3 | 34.9 | 35 |
| J30J08P080S000N00000 | 47.8 | 43.4 | 37.5 | 39.1 | J30J08P080P000N00000 | 47.8 | 43.4 | 39 | 39.1 |
| J30J09P090S000N00000 | 51.9 | 47.5 | 41.6 | 43.2 | J30J09P090P000N00000 | 51.9 | 47.5 | 43.1 | 43.2 |
| J30J10P100S000N00000 | 56 | 51.6 | 45.7 | 47.3 | J30J10P100P000N00000 | 56 | 51.6 | 47.2 | 47.3 |
| J30J09P02JSC00N00000 | 29.7 | 24.5 | 18.6 | 20.2 | J30J09P02KPC00N00000 | 29.7 | 24.5 | 20.1 | 20.2 |
| J30J11P04JSC00N00000 | 36.3 | 30.9 | 25 | 26.6 | J30J11P04KPC00N00000 | 36.3 | 30.9 | 26.5 | 26.6 |
| J30J21P02JSC00N00000 | 36.3 | 30.9 | 25 | 26.6 | J30J21P02KPC00N00000 | 36.3 | 30.9 | 26.5 | 26.6 |
| J30J25P02JSC00N00000 | 36.3 | 30.9 | 25 | 26.6 | J30J25P02KPC00N00000 | 36.3 | 30.9 | 26.5 | 26.6 |
| J30J27P02JSC00N00000 | 36.3 | 30.9 | 25 | 26.6 | J30J27P02KPC00N00000 | 36.3 | 30.9 | 26.5 | 26.6 |
| J30J39P02JSC00N00000 | 42.8 | 37.3 | 31.4 | 33 | J30J39P02KPC00N00000 | 42.8 | 37.3 | 32.9 | 33 |

弯插印制板式

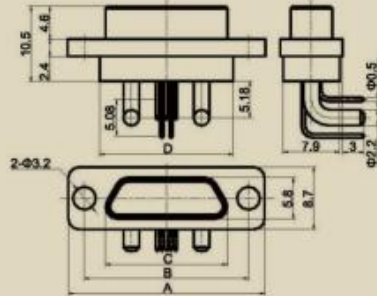
插头 J30J □□P□□ □ S □□□ W1 000 0



J30J 04P04 0 S 000 W1 000 0

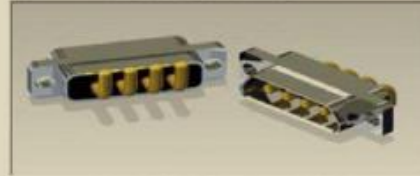


J30J 09P02 J S W01 W1 000 0

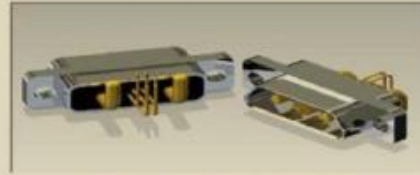


J30J □□P□□ □ S □□□ W1 000 0

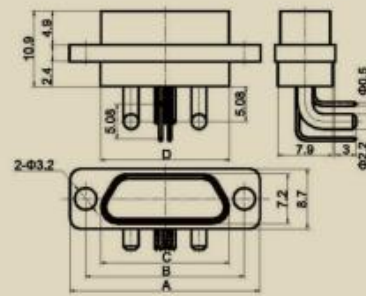
插座 J30J □□P□□ □ P □□□ W1 000 0



J30J 04P04 0 P 000 W1 000 0



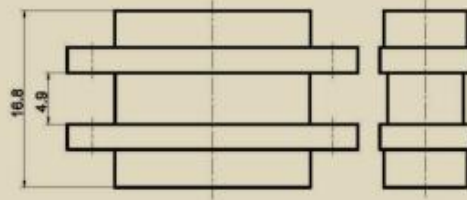
J30J 09P02 K P W01 W1 000 0



J30J □□P□□ □ P □□□ W1 000 0

| 插头型号 | 尺寸 | | | | 插座型号 | 尺寸 | | | |
|----------------------|------|------|------|------|----------------------|------|------|------|------|
| | A | B | C | D | | A | B | C | D |
| J30J02P020S000W00000 | 23.2 | 18.8 | 12.9 | 14.5 | J30J02P020P000W00000 | 23.2 | 18.8 | 14.4 | 14.5 |
| J30J03P030S000W00000 | 27.3 | 22.9 | 17 | 18.6 | J30J03P030P000W00000 | 27.3 | 22.9 | 18.5 | 18.6 |
| J30J04P040S000W00000 | 31.4 | 27 | 21.1 | 22.7 | J30J04P040P000W00000 | 31.4 | 27 | 22.6 | 22.7 |
| J30J05P050S000W00000 | 36.3 | 30.9 | 25 | 26.6 | J30J05P050P000W00000 | 36.3 | 30.6 | 26.5 | 26.6 |
| J30J06P060S000W00000 | 39.6 | 35.2 | 29.3 | 30.9 | J30J06P060P000W00000 | 39.6 | 35.2 | 30.8 | 30.9 |
| J30J07P070S000W00000 | 43.7 | 39.3 | 33.4 | 35 | J30J07P070P000W00000 | 43.7 | 39.3 | 34.9 | 35 |
| J30J08P080S000W00000 | 47.8 | 43.4 | 37.5 | 39.1 | J30J08P080P000W00000 | 47.8 | 43.4 | 39 | 39.1 |
| J30J09P090S000W00000 | 51.9 | 47.5 | 41.6 | 43.2 | J30J09P090P000W00000 | 51.9 | 47.5 | 43.1 | 43.2 |
| J30J10P100S000W00000 | 56 | 51.6 | 45.7 | 47.3 | J30J10P100P000W00000 | 56 | 51.6 | 47.2 | 47.3 |
| J30J09P02JSC00W00000 | 29.7 | 24.5 | 18.6 | 20.2 | J30J09P02KPC00W00000 | 29.7 | 24.5 | 20.1 | 20.2 |
| J30J11P04JSC00W00000 | 36.3 | 30.9 | 25 | 26.6 | J30J11P04KPC00W00000 | 36.3 | 30.9 | 26.5 | 26.6 |
| J30J21P02JSC00W00000 | 36.3 | 30.9 | 25 | 26.6 | J30J21P02KPC00W00000 | 36.3 | 30.9 | 26.5 | 26.6 |
| J30J25P02JSC00W00000 | 36.3 | 30.9 | 25 | 26.6 | J30J25P02KPC00W00000 | 36.3 | 30.9 | 26.5 | 26.6 |
| J30J27P02JSC00W00000 | 36.3 | 30.9 | 25 | 26.6 | J30J27P02KPC00W00000 | 36.3 | 30.9 | 26.5 | 26.6 |
| J30J39P02JSC00W00000 | 42.8 | 37.3 | 31.4 | 33 | J30J39P02KPC00W00000 | 42.8 | 37.3 | 32.9 | 33 |

产品对接后外形图



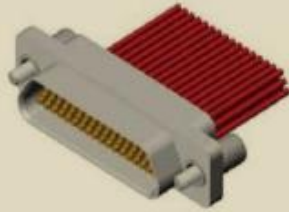
J30J大小电流混装

J30J系列大小电流混装矩形电连接器\锁紧附件

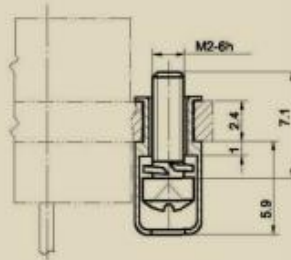
自由端锁紧附件

J30JL00

组装示意图

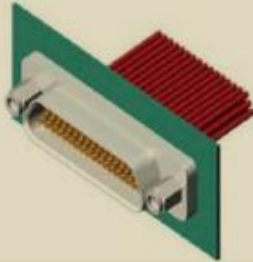


外形尺寸图

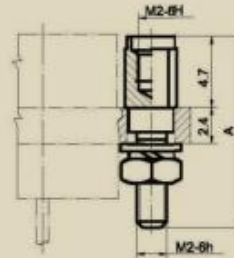


J30JP00, J30JP12

组装示意图



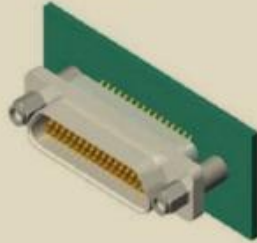
外形尺寸图



| 锁紧附件代号 | A |
|---------|------|
| J30JP00 | 12.6 |
| J30JP12 | 15.6 |

J30JP03

组装示意图

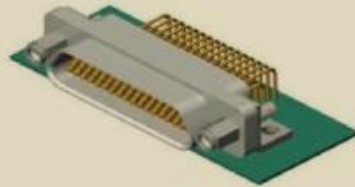


外形尺寸图

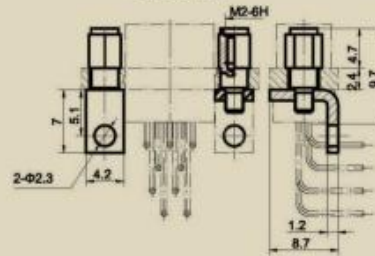


J30JP04

组装示意图

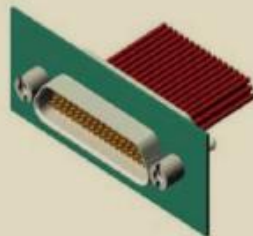


外形尺寸图

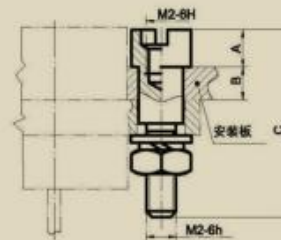


J30JP05、J30JP06、J30JP07、J30JP08、J30JP09外形尺寸图

组装示意图



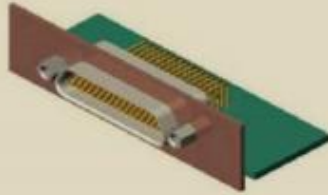
外形尺寸图



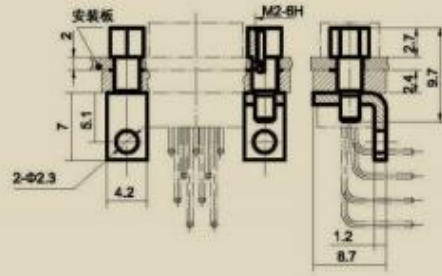
| 锁紧附件代号 | A | B | C |
|---------|-----|-----|------|
| J30JP05 | 4.1 | 0.6 | 12.6 |
| J30JP06 | 3.3 | 1.4 | 12.6 |
| J30JP07 | 2.5 | 2.2 | 12.6 |
| J30JP08 | 1.3 | 3.4 | 12.6 |
| J30JP09 | 2.7 | 2 | 20 |

J30.P10

组装示意图

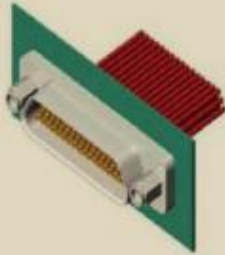


外形尺寸图

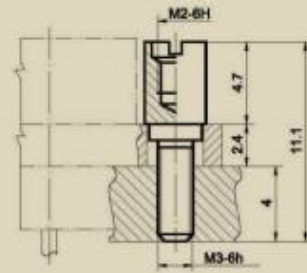


J30.P11

组装示意图



外形尺寸图



J30J系列大小电流混装矩形电连接器\尾部附件

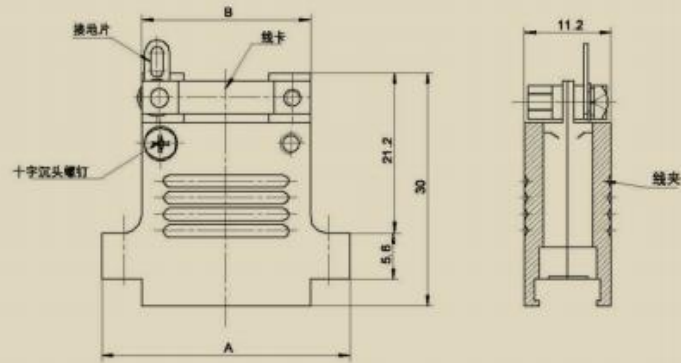
线夹合件

J30J □□□A3外形尺寸图

组装示意图



外形尺寸图



| 线夹合件代号 | A | B | 线夹合件代号 | A | B |
|-------------|------|------|-------------|------|------|
| J30J02P02A3 | 23.3 | 14.5 | J30J10P10A3 | 56.1 | 47.3 |
| J30J03P03A3 | 27.4 | 18.6 | J30J08P02A3 | 29.8 | 20.2 |
| J30J04P04A3 | 31.5 | 22.7 | J30J11P04A3 | 36.4 | 26.6 |
| J30J05P05A3 | 36.4 | 26.6 | J30J21P02A3 | 36.4 | 26.6 |
| J30J06P06A3 | 39.7 | 30.9 | J30J25P02A3 | 36.4 | 26.6 |
| J30J07P07A3 | 43.8 | 35 | J30J27P02A3 | 36.4 | 26.6 |
| J30J08P08A3 | 47.9 | 39.1 | J30J38P02A3 | 42.9 | 33 |
| J30J09P09A3 | 52 | 43.2 | | | |